

# How to make... a Rapunzel story set

Suitable for ages 3-7

## You will need:

- Three toilet roll tubes
- Thin card (a cereal box works well)
- White paper
- Felt tip pens or colouring pencils
- Scissors
- Glue
- Tape

## Optional:

- Wool or string
- Tissue paper
- Coloured paper
- Bamboo skewers or lolly sticks
- Access to a printer



If you enjoyed Charlie Mafham's reading of *Rapunzel*, why not make your own set and puppets so you can perform the story at home? This activity sheet includes a template you can use to create the characters.

## Instructions:

### Step 1:

Cut short slits into one end of your first toilet roll. Then fold these sections back.



### Step 2:

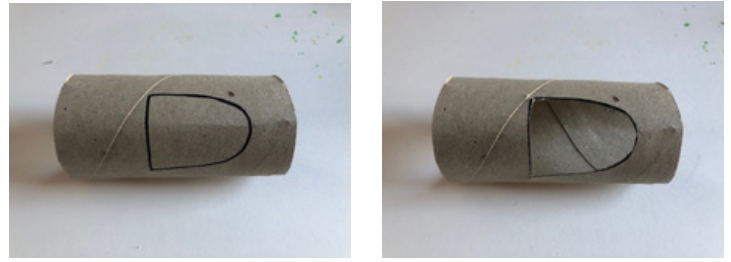
Tape down to a piece of card. Then tape your second toilet roll on top.



# How to make... a Rapunzel story set

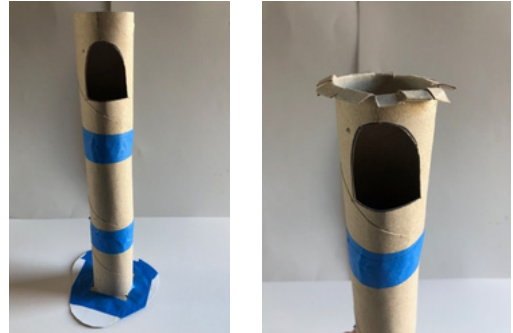
## Step 3:

Draw a window shape in the middle of your third toilet roll, and cut this out.



## Step 4:

Tape this final tube on top of the others. Then cut short slits in the top of your tower and fold them back, just like you did at the beginning.



## Step 5:

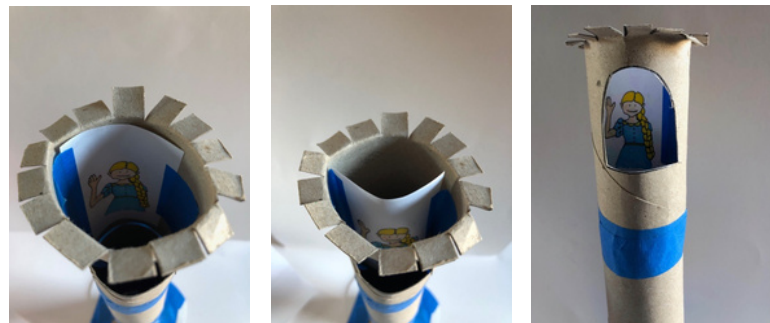
Cut a rectangular piece of paper that is a little wider than the inside of your tower, and draw a picture of Rapunzel. Alternatively, you can print out and colour in our template.



## Step 6:

Add a strip of tape on either side of your paper rectangle and stick it to the inside of your tower so you can see Rapunzel through the window.

Get your finger behind the paper and push it out so that it bends around the inside of your tower.



## Step 7:

Draw a large circle on a thin piece of card. You could draw around a roll of tape or a small bowl to help you. Cut out your circle, then cut out a section of it, just like in this picture.



## Step 8:

Make a cone by pulling in the two edges of this shape and overlapping them slightly. Tape them into place.



# How to make... a Rapunzel story set

## Step 9:

Turn your cone and tower upside down. Push the folded over sections at the top of your tower into the cone and tape them in place.



## Step 10:

Cut a strip of paper the right size to wrap around your tower. This could be white paper, or coloured paper if you have it. We used a bit of brown packing paper that came with a parcel. Cover your tower with glue and wrap the paper around it. Take care to cut the window hole back in once it is all glued in place.



## Step 11:

Now it's time to decorate! You could use paint, felt tip pens or colouring pencils. Don't forget the base and the roof - we covered these with some tissue paper, but you could use anything you like.



## What next?

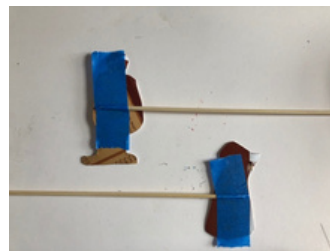
### Rapunzel's hair:

If you have wool or string you could make a long plait and tape it into the tower, next to the window.



### Other characters:

You could use our templates or draw your own witch and prince. Glue these onto some thin card and tape a bamboo skewer or lolly stick on the back so you can puppeteer them.



### Perform:

Now you have all the characters, why not act out the story?

Templates:

Rapunzel



Prince



Witch

