



**Little Angel Theatre
presents**



THE STORM WHALE

Resource and Education Pack

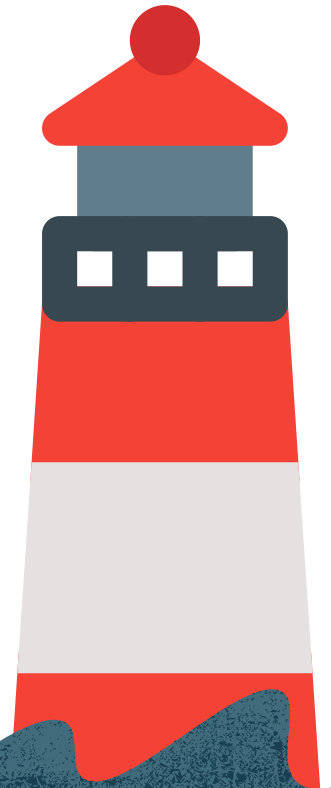


Noi lives with his Dad and their six cats by the sea. One winter, while his Dad was busy at work, Noi rescued a little whale that washed up on the beach during a storm. There a friendship began that changed their lives forever.

The following winter Noi's Dad takes one last trip in his fishing boat. Noi is alone once more and longs to see his friend again. He waits and watches, watches and waits... will it take another winter storm to bring them back together again?

Benji Davies' tender and heart-warming children's stories of friendship, love and courage are brought to life as one enchanting theatre show.

THE STORM WHALE



ABOUT LITTLE ANGEL

John Wright, the founder of Little Angel Theatre, was born in South Africa in 1906. He travelled to England in 1935 and worked as an assistant stage manager for the Ballet Rambert while studying at the Central School of Art and Design. During this time he saw a puppet performance by Podrecca's Piccoli and became hooked. John made his very first puppet in 1938. In 1961 John and his troupe found a derelict temperance hall in Islington and transformed it into a theatre, designed for the presentation of marionette shows. It opened on Saturday 24th November 1961.

This was to be the first purpose built puppet theatre the country had seen for many years and the only one with a permanent long string marionette bridge constructed backstage. The bridge was designed for puppeteers to stand on while they manipulate long stringed puppets who perform on the stage below leaving the audience unable to see the puppeteers. The original bridge is used to this day. The theatre has a traditional 'proscenium arch' and seats 100 audience members.

John Wright died in 1991 but the work of the theatre continued apace with family, friends and supporters working tirelessly to continue in his footsteps to make sure John's legacy would delight generations to come.



"Over the next 30 years, the Little Angel team created and performed over 30 full-scale shows"

ACTIVITY #1: DESCRIBING THE STORM

Topic: Adjectives and descriptive words to describe people, places and things.

Activity: Use adjectives to describe to describe the storm. (Is it loud? Is it calm?) Find words to characterize Noi (Is he lonely? Is he brave?)

ACTIVITY #2: WRITING A LETTER

Topic: Letter writing, writing from another point of view.

Activity: Imagine the Storm Whale writes Noi a letter describing his life in the sea. What would he say?

ACTIVITY #3: CREATING A NEW STORY

Topic: Creating a new story, story structure.

Activity: Write a new story about an adventure that Noi, his Dad, and Flo go on with the Storm Whale. What other mischief does Noi get into?

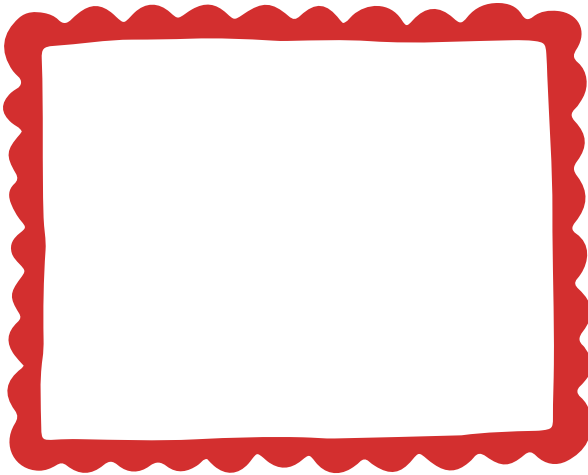




WEATHER ACTIVITY

EXPLORING DIFFERENT KINDS OF WEATHER

Activity: For each kind of weather listed, draw what the conditions would look like on Noi's island by the sea. Then use the space provided to describe your picture. What would he be wearing outside? What would the sea look like? What does the air feel like?



SUNNY

.....

.....

.....

.....

.....

.....

.....

.....



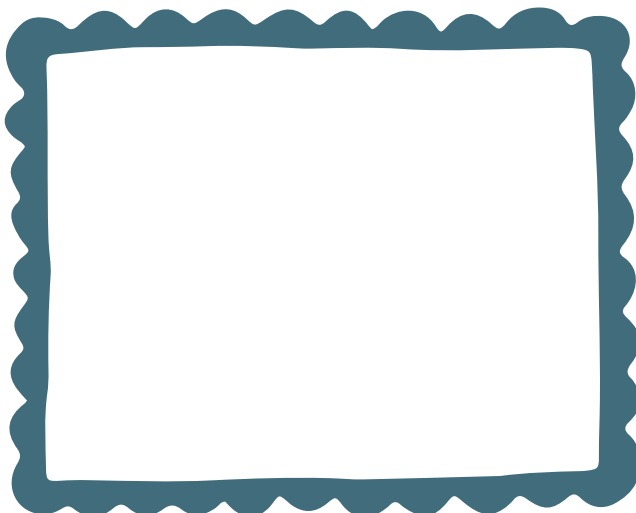
SNOWY

.....

.....

.....

.....



RAINY

ACTIVITY #1: SOUNDTRACK OF A STORM

Topic: Creating a soundscape, collaboration

Activity: As a group, create your own soundscape of the ocean at different parts of the day. Use objects or instruments or even your own body to make the sounds of the ocean. What might the ocean sound like at night? During a storm?

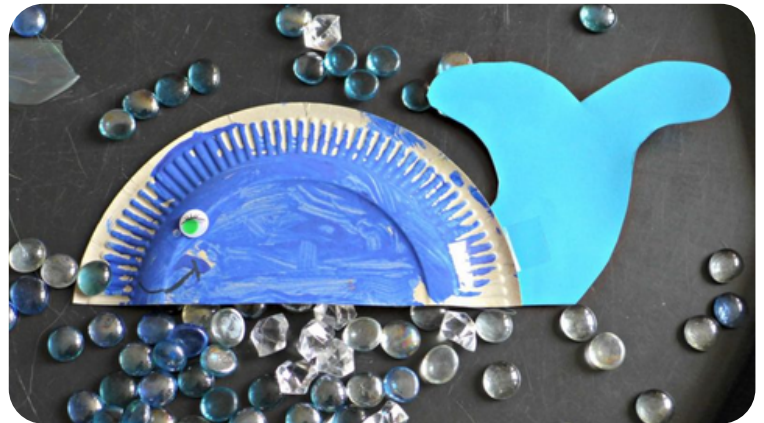
ACTIVITY #2: MAKE YOUR OWN WHALE FRIEND

Topic: Arts and Crafts

Resources: paper plates, colored cardstock, paint and other decorations, scissors, glue, googly eyes, tape, lolly stick

Instructions:

- Cut the plates in half to create your whale body
- Use paint or other materials, like bubblewrap, to create a pattern on the whale body
- After the whales dry, draw a stencil of a whale tail on card and cut them out.
- Attach the tail to the body and add googly eyes and any other decorations to make your friend unique!
- Add a popsicle stick to the body to make your whale into a puppet – and create your own Storm Whale story!



Craft idea and pictures credited to Sara Burns, Let them Be Small, <https://letthembesmall.com/paper-plate-whales/>



PSHE: DISCUSSION ABOUT LONELINESS

"It's okay to be alone sometimes as long as you're not lonely" – Noi

UNPACKING THE FEELING OF LONELINESS

Objective: Learners will be able to identify loneliness and explore the emotion, reflect on the importance of meaningful connections and ways to cope with loneliness.

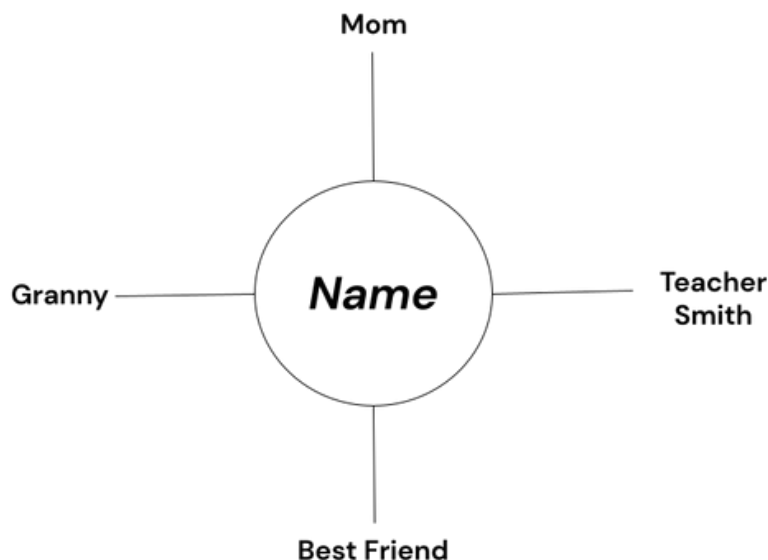
WHAT IS LONELINESS?

Start by asking learners what they think loneliness is. Ask them to draw or describe their loneliness. Ask them to think about the following:

- What other words or things do you associate with the word?
- Is loneliness the same as being on your own or being bored?
- What are the differences between these feelings?
- Why might people feel lonely?

WEB OF CONNECTIONS

Encourage learners to think about all the people they have in their lives that they can talk to or ask for help safely. Ask learners to draw a circle with them in the middle and draw all the people they know and can safely connect to around the outside.



MEANINGFUL CONNECTIONS

As a group, discuss the phrase "meaningful connection." Ask learners to pick one person who they think is their most meaningful connection and helps with loneliness the most.

Describe that person in three words. Write, draw or create a poem about that person and what they mean to them.

Talk about the show and Noi's relationship with the other characters in the story, including his connection with the Storm Whale.

COPING WITH LONELINESS

Ask learners to think about ways that other people help them when they feel lonely. What kind of kind actions and words help us feel less lonely?

Talk about the things we can do to cope with our own feelings of loneliness. List activities and words of affirmation that learners can use when they feel lonely.



ABOUT LITTLE ANGEL

<https://littleangeltheatre.com>

More information about the history of the theater and future productions and workshops, including our school menu.

TEACHING MENTAL HEALTH

<https://www.redcross.org.uk/get-involved/teaching-resources/tackling-loneliness>

SHOW CREDITS

Based on *The Storm Whale* and *The Storm Whale in Winter* by Benji Davies

Written and directed by Matt Aston

Designed by Lydia Denno

Lighting designed by Jason Salvin

Composer / Musical Director Julian Butler

Choreographed by Hayley Del Harrison

Puppet direction by Sue Dacre

Puppets made by Keith Frederick

Production photos by Northedge Photography

Education packet created by Marley Schwarz

