

The Everywhere Bear

A Little Angel Theatre, Polka Theatre, Royal
Derngate and Northampton production

3rd February - 14th April 2024

Aimed at ages 3 - 8

Directed by Peter Glanville

Associate Directed by Maia Kirkman-Richard

Music and Composition by Julian Butler

Set and costume design by Laura McEwan

Puppets designed and made by Jan Zalud

Lighting Designers David Duffy and Clancy Flynn

Performed by Calum Bruce and Lottie Johnson



PETER GLANDVILLE - Director

Peter has been Artistic Director of Polka Theatre since 2013, and has directed shows including ROH co-production Hatch ; Early Years Opera Skitterbang Island , Julia Donaldson's The Paper Dolls and Ready, Steady, Go ! He won an OFFIE for his adaptation of Peter Pan at Polka in 2015. For Little Angel Theatre he has also directed an acclaimed Macbeth with Helen McCrory, The Tempest (RSC Co-Production) for The Swan Theatre and Carol Ann Duffy's The Tear Thief , narrated by Juliet Stevenson. Peter has recently been appointed CEO of Farnham Maltings and will begin his new role in January 2023.

**MAIA KIRKMAN - RICHARDS
- Associate Director**

Maia is a Designer, Maker, Director, & Performer of puppetry and enjoys collaborating on puppetry projects to create exciting and imaginative new work. In 2018, Maia was selected for the Old Vic 12 as their first Puppetry Consultant. Design credits include: Our Teacher's A Troll (Ruined Theatre), Wind In The Willows (The Turbine Theatre & UK tour), The Sorcerer's Apprentice (Southwark Playhouse), The Butterfly Lion (The Barn Theatre), The Further Adventures Of The Owl And The Pussycat (The Little Angel), The Slightly Annoying Elephant (The Little Angel).

JULIAN BUTLER - Music & Lyrics

Julian has written music and lyrics for lots of shows for young people, including The Paper Dolls, The Everywhere Bear (Polka Theatre/Little Angel), the Charlie and Lola live shows, Sarah and Duck, Twirlywoos (CBBC/MEI Productions), The Night Before Christmas (Polka Theatre/Royal and Derngate), and Grandad's Island (Engine House/York Theatre Royal). He studied music at Liverpool University, and acting at LAMDA.

LAURA MCEWAN - Set Designer

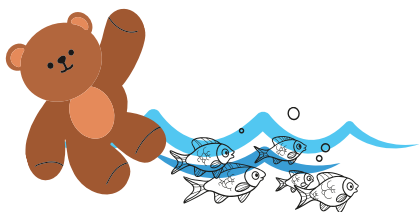
Laura McEwen has been designing for theatre for more than twenty years. She has a specialism in designing for young audiences and had worked for national and international companies including the Royal Shakespeare Company, English National Opera, Unicorn Theatre, Polka Theatre and Little Angel Theatre. Her work has toured worldwide across Asia and as far as Sydney Opera House. Most recently she worked alongside theatre architects Foster Wilson in designing the interior of the new Polka Theatre in London, a venue dedicated exclusively to work for young audiences. Laura has had her designs for theatre exhibited at the Victoria and Albert Museum and her work as an artist exhibited at the Royal Academy, London.

DAVID DUFFY - Lighting Designer

David has lit over 25 Little Angel productions, and has delivered talks on lighting design for puppetry at PLASA, RCCD, Showlight in Florence and the HipFest in Iceland. Recent credits include Jonny Feathers the Rock and Roll Pigeon (Riverside), Little Manfred (Soldiers Arts Academy), Paper Dolls (Polka) and Five Little Monkeys (Hurlingham Club)

JAN ZALUD - Puppet Designer

Jan Zalud makes puppets and automata both nationally and internationally. Credits for Little Angel Theatre include: Grimaldi, Go Noah Go!, A Very Old Man with Enormous Wings, The Tear Thief, Sleeping Beauty in the Wood. Other credits include: More Grimm Tales (Young Vic); Venus and Adonis, Love's Labour's Lost, The Tempest (RSC); The Frog and the Princess, Beauty and the Beast (Norwich Puppet Theatre); Rebecca, Dead Dog in a Suitcase, Tin Drum (Kneehigh); A Christmas Carol (Noel Coward Theatre); Fish (Harold Pinter Theatre); The Little Matchgirl (Shakespeare's Globe); Hansel and Gretel (A nightmare in eight scenes) (Goldfield).



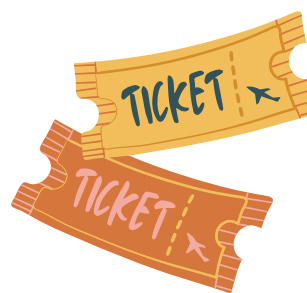
LOTTIE JOHNSON - Performer

Lottie is an Actress and Puppeteer from Hertfordshire and trained at Mountview Academy of Theatre Arts. Her credits include: Little Angel Theatre's Miniature Travelling Circus, Tales from Acorn Wood (UK Tour), Thursford Christmas Spectacular, Josephine in HMS Pinafore, Logainne Schwartzandgrubenierre in The 25th Annual Putnam County Spelling Bee, Land of Nod and Little Red Riding Hood (Moon on a Stick).

CALUM BRUCE - Performer

This is Calum's second run of 'The Everywhere Bear' and he cannot wait to be back puppeteering young Matt and slinging fish as Mrs Bishop.

Calum is an actor and puppeteer from Northumberland who last year trained at the Curious School of Puppetry. His recent credits include 'Dragon' (Life and Limb Puppets), The Squid and The Sea (Tatwood Puppets), The Cabaret of Curiosities (Tatwood Puppets) and Tyne Rising (Moving Parts Arts).

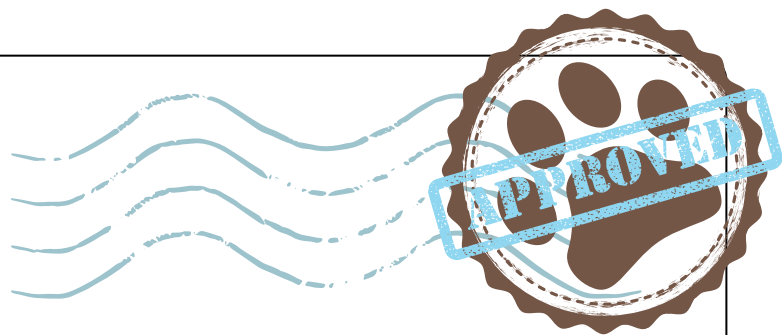


Were you inspired by the show?

Draw your favourite moment from the show and we will include it on our website and social media!

Please send your completed drawings to marketing@littleangeltheatre.com





Let's all go on a teddy bear hunt!

Little Angel Theatre invites you to join our Everywhere Bear Adventure across Islington + your own favourite places to visit!

The Everywhere Bear is all about imagination and adventure! What does your teddy bear get up to when you leave the house? Let's see if you can spot where The Everywhere Bear has been venturing to around Islington – keep your eyes peeled on our social media!

Come and visit our theatre venue to pick up of our our travel cards (below) and get each location you have visited stamped off! Make sure to send us a picture of you and your cuddly friend at each location to get featured on our social media.

Send your submissions to marketing@littleangeltheatre.com or tag us in your social media post



The Everywhere Bear



The Little Angel Theatre



Union Chapel



Islington Square



Angel Central



Camden Passage



Highbury Feild



Regent Canal



The Little Angel Studio

