

## **LITTLE ANGEL STUDIOS - Access Rider**



Front of Little Angel Studios

### **The Building**

The Studios are wheelchair accessible with the entrance at street level.

### **Getting here**

The Studios are located on Sebbon Street, N1 2EH.

### **By car**

On street parking is very limited in the areas surrounding the theatre.

However, in Islington Blue Badge holders can park on a single yellow line for up to three hours. All vehicles can park on a single yellow line after 1.30pm on Saturdays and all day on Sundays.

The closest Disabled Parking bays are located on Halton Road (approx. 200m away) and Canonbury Villas (approx. 300m away).

The closest car park is at Angel Central, 21 Parkfield Street, N1 0BS (approx. 800m away) which has 100 spaces.

Drop off is possible directly outside the Studios on Sebbon Street. The closest dropped kerb is on the corner of Sebbon Street and Hawes Street.

### **By tube or train**

The closest stations are Angel (Northern Line), Highbury and Islington (Victoria Line, Overground, National Rail) and Essex Road (National Rail).

Angel and Essex Road have no step free access.

Highbury & Islington has step free access from the platform to the street.

The closest station with step free access from train to street is King's Cross St Pancras (Victoria, Piccadilly, Northern, Circle, Metropolitan and Hammersmith and City lines).

### **By bus**

Bus route 271 to Essex Road. Alight at Canonbury Grove (approx. 200m away).

### **Facilities**

There are accessible toilets located on each floor.

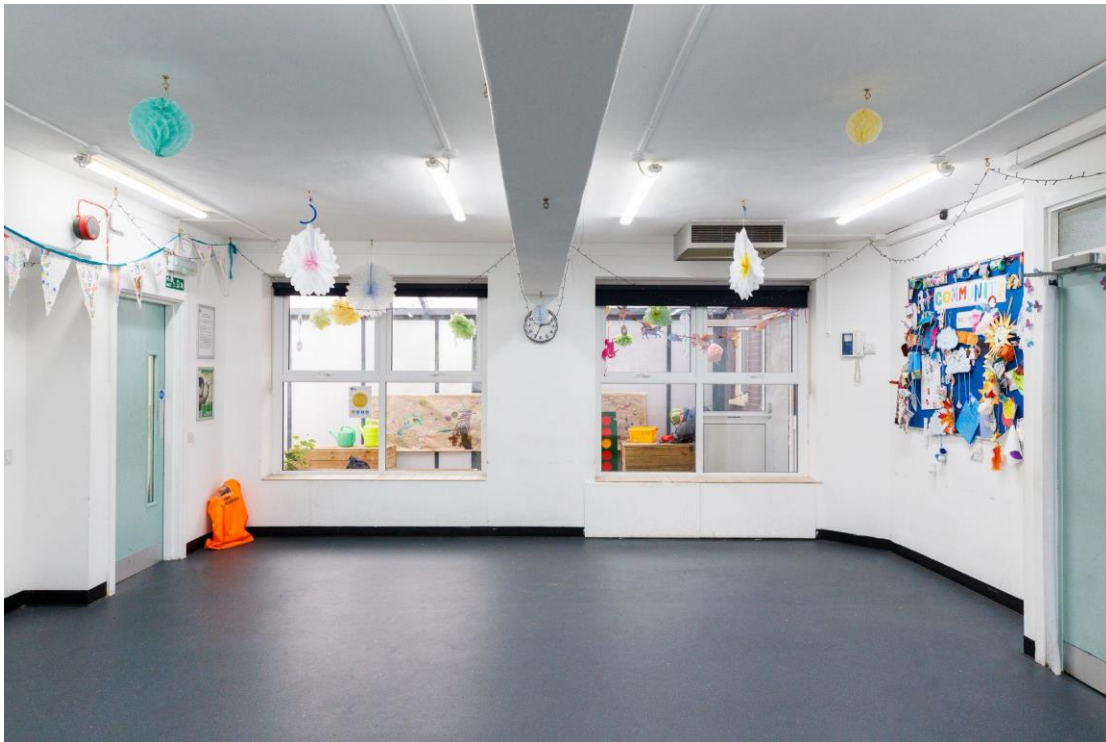
The dimensions of the Ground Floor disabled toilet are: 1.75m x 1.9m

The dimensions of the First Floor disabled toilet are: 1.9m x 2.2m

There is a lift for wheelchair users however the lift can only accommodate the following dimensions. W: .86m / L: 0.97m / H: 2.1m / Maximum weight: 300kg. Please note that our office space in this venue is on the second floor.



Foyer space



Studio 2



Studio 1



Studios garden



Studios Office exterior

## **LITTLE ANGEL THEATRE - Access Rider**



Front of the Theatre

### **The Building**

The Theatre is wheelchair accessible via a ramp in the entrance.

Our foyer, Box Office, shop, toilets and auditorium space are all on the ground floor. Please note that the theatre office space has no step-free access.

### **Getting Here**

The theatre is located on Dagmar Passage, N1 2DN.

#### **By car**

On street parking is very limited in the areas surrounding the theatre.

However, in Islington Blue Badge holders can park on a single yellow line for up to three hours. All vehicles can park on a single yellow line after 1.30pm on Saturdays and all day on Sundays.

There is a designated disabled parking bay on Theberton Street (approx. 300m away) where Blue Badge holders can park for an unlimited time. There are a number of parking bays on

Upper Street, opposite Nando's (approx. 400m away), which are free for Blue Badge holders until 4pm Monday-Saturday.

The closest car park is at Angel Central, 21 Parkfield Street, N1 0BS (approx. 800m away) which has 100 spaces.

The closest drop off point is on Cross Street (N1 2BB), where there is a dropped kerb and easy access along Dagmar Passage to the theatre entrance.

We can sometimes arrange parking space outside of the theatre with advance notice for those who require it. If this is something you require please contact [beth@littleangeltheatre.com](mailto:beth@littleangeltheatre.com).

### **By tube or train**

The closest stations are Angel (Northern Line), Highbury and Islington (Victoria Line, Overground, National Rail) and Essex Road (National Rail).

Angel and Essex Road have no step free access.

Highbury & Islington has step free access from the platform to the street.

The closest station with step free access from train to street is King's Cross St Pancras (Victoria, Piccadilly, Northern, Circle, Metropolitan and Hammersmith and City lines) from where you can catch the 476, 73 Or 30 bus to the theatre.

### **By bus**

Bus routes 4, 19, 30, 43, and 236a (Sundays only) to Upper Street. Alight at St Mary's Church.

Bus routes 38, 56, 73, 341 to Essex Road. Alight at Packington Street.

Both bus stops are less than 200 metres from our venue.

### **Facilities**

There is an accessible toilet on the ground floor. The dimensions of the accessible toilet are: 1.35m x 1.45m.



Theatre Box Office



Theatre Corridor to Office (toilets on right hand side)





Theatre Auditorium



Theatre Office (no step-free access)