

# Little Angel Theatre's Miniature Travelling Circus

by Little Angel Theatre

15 February - 19 April 2025

## CREDITS

Written & devised by Miranda Pitcher & Lizzie Wort

Directed by Miranda Pitcher

Performed by Lizzie Wort and Charlotte Irwin

Puppets Design by Lyndie Wright

Book designed by Vicki Fullick

Lighting Design by Sherry Coenen

Music & Sound design by Julian Butler

Set & Costume design by Miranda Pitcher

Stage Managed by Victoria Porter

Special thanks to Kate Bunce, Simon Plumridge and Valerie Rutt



# Meet the Creative Team

## **MIRANDA PITCHER -**

### **Writer/Devisor/Director/Set and Costume design**

Miranda is an artist and maker and has worked in theatre and education for over 30 years. She has been at Little Angel for 16 years working across all departments. "It is an absolute joy and privilege to be part of this unique and magical theatre – especially creating accessible and affordable art for children who have often never had the opportunity to experience live performances."

## **JULIAN BUTLER -**

### **Music and Sound design**

Julian has written music and lyrics for lots of shows for young audiences, including *The Everywhere Bear* and *The Paper Dolls* (Polka Theatre/Little Angel), *Grandad's Island*, *The Storm Whale* and *The Snowflake* (all based on the books by Benji Davies), *The Night Before Christmas* (Polka Theatre/ Royal & Derngate), *Can Bears Ski?* (Deafinitely Theatre/Pied Piper). He also wrote music for the Charlie and Lola live shows, *Twirlwoos* and *Sarah & Duck* (BBC). His own musical *Neverland* debuted at Nottingham Lakeside Arts, and is now regularly performed around the world.

## **SHERRY COENEN - Lighting Designer**

Sherry has been lighting shows in the US and UK since graduating with a BFA in Lighting Design from the University of Miami. Shows for Little Angel Theatre: *I Want My Hat Back Trilogy*, *The Singing Mermaid*, *Finding Santa*, *Wow! It's Night-Time*, *Prince Charming*, *The Pixie and the Pudding*, *Where the Bugaboo Lives*, *The Smartest Giant in Town*, *There's a Rang Tan in my Bedroom*, *There May be a Castle*. Other shows include: *Operation Mince meat* (NDT) \*KOI nominated 2019\*, *Frankenstein* (BAC) \*KOI winner 2019\*, *A Place for We* (Park200), *Izindava* (UK Tour), *This is How We Die* (UK Tour), *Cinderella* (Queen's Theatre Hornchurch).

## **LYNDIE WRIGHT - Puppet designer**

In 1961 Lyndie and John Wright founded Little Angel Theatre. Lyndie was responsible for designing Little Angel Theatre shows as well as making puppets and performing in the productions of the first 40 years. She retired from Little Angel Theatre in 2002, but continues to design and make puppets for theatres including not just Little Angel Theatre, but also the RSC, National Theatre, Shakespeare's Globe, Opera North, Opera Circus, Tamasha, Puppet Players – Munich, Polka Theatre, TheatreRites and Kneehigh. Most recently she has made puppets for *The Little Matchgirl* (Shakespeare's Globe) and *Tin Drum* (Kneehigh)

# Meet the Cast & Stage Management

## LIZZIE WORT -

### **Additional text/Devisor/Performer**

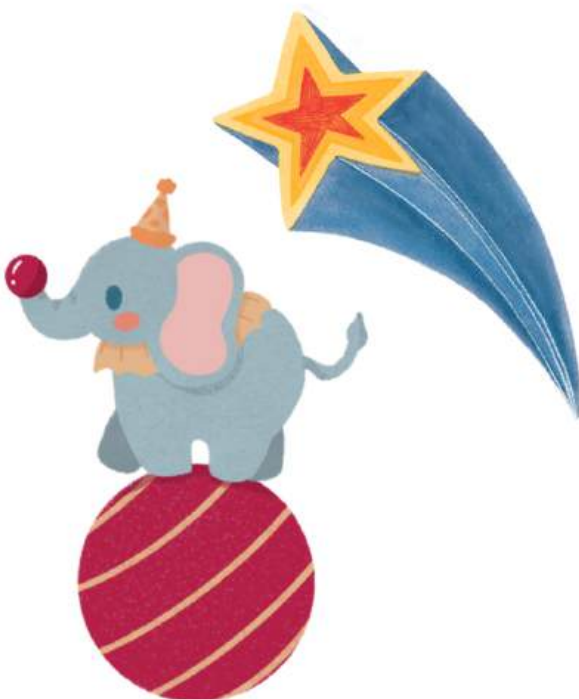
Lizzie trained at Elmhurst Ballet School & Bretton Hall. Previous work: *Hansel & Gretel* (Goldfield); *The Smartest Giant in Town*, *The Dong with a Luminous Nose*, *The Bed*, *The Singing Mermaid*, *WOW! Said the Owl*, *WOW! It's Night-time* (Little Angel Theatre); *The Unremarkable Death Of Marilyn Monroe* (Dyad); *Potted Sherlock* (Vaudeville); *Animal Farm* (Guy Masterson); *The Magician's Daughter* (Little Angel Theatre/RSC), *To Have & To Honk* (John Wright), *When We Lived In Uncle's Hat* (York Theatre Royal/Tutti Frutti); *The Chronicles of Bitter & Twisted* (Galopin/Arcola). TV credits: *Snuffbox* (BBC 3), *The Mighty Boosh* (BBC3), *Rob Newman* (Channel 4) and comedy sketches for CBBC.

## CHARLOTTE IRWIN - Performer

Charlotte is a performer, director and writer specialising in puppetry. She has worked on numerous children's theatre productions, including *Wild Wilma*, *Rolo's Museum*, *Jack, Jill and the Landfill*, *Pop-Up Performance Shop*, *Masterchef Mo and the Missing Cake*, *Puppets in Peril*, *The Imagination Train* and most recently *Scruff's Christmas Adventure*.

## VICTORIA PORTER - Stage Manager

Victoria graduated with a degree in Theatre Production from Bath Spa University and has worked in Stage Management for venues including The Queens Theatre Hornchurch, The Watermill Theatre Newbury, Theatre Royal Bury St Edmunds, Civic Theatre Chelmsford, Wyvern Swindon, Theatre Under The Stars at the Malkin Bowl, Vancouver and more recently on productions of *The Flying Bath*, *Emily Rising*, *Me... , Wolves in the Walls* and *The Wishing Tree* for Little Angel Theatre.



# Were you inspired by the show?

Draw a picture of your favourite moment in the show and we will include it on our website and social media!

Please send your completed drawings to  
[marketing@littleangeltheatre.com](mailto:marketing@littleangeltheatre.com)



