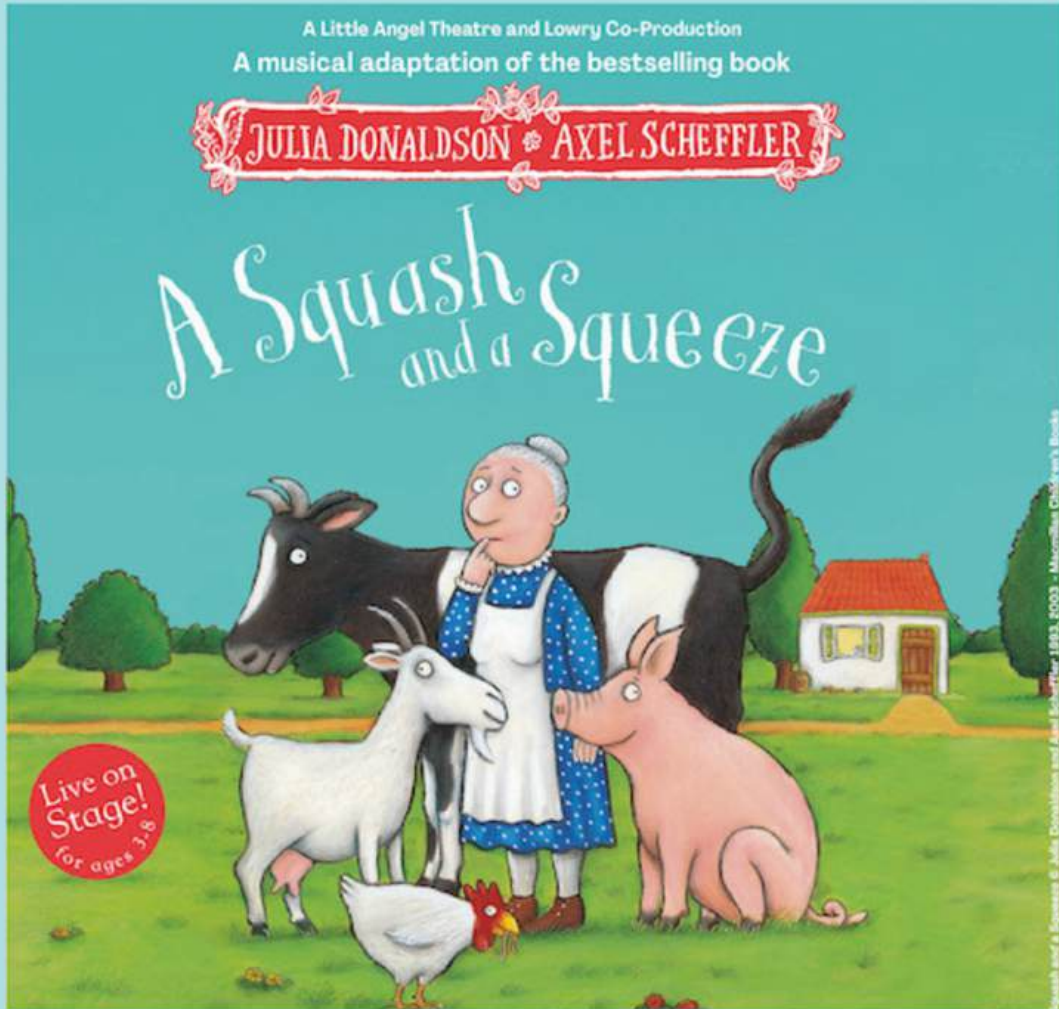


A Squash and a Squeeze



A Little Angel Theatre and Lowry co-production

Aimed at ages 3 - 8

**A musical adaptation of the best-selling book by
Julia Donaldson and Axel Scheffler**

Adapted by Barb Jungr and Samantha Lane

Directed by Samantha Lane

Music and Lyrics by Barb Jungr

Set and Costume designed by Kate Bunce

Puppets designed and made by Maia Kirkman Richards

Lighting Design by Sherry Coenen

Performed by Ruth Calkin, Mark Esaias and Gilbert Taylor

Stage Managed by Olivia Presto

Meet the Creative Team of A Squash and a Squeeze...

JULIA DONALDSON - Author

Julia Catherine Donaldson CBE is a celebrated British author, playwright and performer, best known for her popular rhyming stories including *The Gruffalo*, *Room of the Broom* and *Stickman* in which she was appointed Children's Laureate from 2011-13. Of her published works, 64 are widely available in bookshops. The remaining 120 are intended for school use and include her *Songbirds* phonic reading scheme, which is part of the Oxford Reading Tree.

AXEL SCHEFFLER - Illustrator

Axel Scheffler was born in Hamburg, Germany in 1957. He studied history of art in Hamburg, before moving to the United Kingdom to study illustration at Bath Academy of Art in 1982. Since then, he has worked as a freelance illustrator in London. He is best known for the children's books he has illustrated through his partnership with author, Julia Donaldson. Their first book together, *A Squash and A Squeeze*, was published in 1993 and has sold over 2.2 million copies worldwide. The duo then went on to create *The Gruffalo*, which has sold over 18 million copies, in over 100 languages throughout the world. He lives in London. www.axelscheffler.com

SAMANTHA LANE - Adaption and Director

Samantha Lane began her tenure as Artistic Director at Little Angel Theatre in 2015. She was formerly Director of Projects at the Almeida Theatre where she made theatre for, by and with young people aged 14-25; and Education Manager at the Queen's Theatre, Hornchurch, where she created numerous Theatre-in-Education shows for primary and secondary schools, as well as directing community plays with casts of 60+ people. During her time at LAT, she has commissioned and programmed over 150 shows, and adapted/directed over 10 of these.

BARB JUNGR - Adaption & Composition

Barb Jungr is an award winning international performer, recording artist, composer and lyricist. Her work in children's and family theatre as lyricist, composer, co-writer and co-adapter for Little Angel Theatre includes the 2023 Olivier nominated *The Smartest Giant in Town*, *There May Be A Castle*, *The Singing Mermaid*, *The Pixie and the Pudding*, *The Fabulous Flutterbys*, and *We're Going on a Bear Hunt*. She co-wrote the script and was composer for *Mother Christmas* (Little Angel short film and *Dare* (Polka). Other work as composer and lyricist includes *Chocolate Cake*, *How to Hide a Lion and Jack V Giant* (Polka Theatre); and lyricist/writer *Liverpool Birds Flying Home* (Royal Court Theatre, Liverpool); lyricist *Jungle Book* (Birmingham Stage Company) and *Soho Songs* (Crazy Coqs, London) and for the song cycle *Mabel Stark Tiger Tamer*.

KATE BUNCE - Set and Costume Design

Kate has designed set and costume for over 60 shows. Her work often focuses on playing with scale, and revealing surprises. Kate has applied this approach to a wide range of productions, from small library tours to costume design for large immersive experiences, national and international touring. Companies worked for include Royal & Derngate, The New Vic, Wardrobe Ensemble, Little Angel Theatre, Almeida, Old Vic, Tutti Frutti Productions, York Theatre Royal, ABA Productions, Pentabus, National theatre, Birmingham Rep, Polka Theatre, BAC and BBC. Kate has also worked as a Design lecturer for The Royal College of Art and Central School of Speech and Drama. Recent highlights includes A Fierylight & Little Angel Theatre co-production, a musical adaptation of *The Smartest Giant in Town* by Julia Donaldson, and recently an Olivier award nominated for an Olivier award and Costume design for *Lost Origin* and *Unearthed* for Factory 42 and *The keyworkers Cycle* for Almeida.

MAIA KIRKMAN-RICHARDS - Puppet Design

Maia is a Designer, Director, & Maker of puppetry and enjoys collaborating on puppetry projects to create exciting and imaginative new work. In 2018, Maia was selected for the Old Vic 12 as their first Puppetry Consultant.

Puppet Design credits include: *The Artist* (Theatre Royal Plymouth), *The Sorcerer's Apprentice* (Southwark Playhouse), *My Cloud* (National Theatre of Qatar), *Our Teacher's A Troll*, *Peter Pan & The Battle For Neverland* (Ruined Theatre), *Great Apes* (Arcola), *Wind In The Willows* (The Turbine Theatre & UK tour), *The Butterfly Lion* (The Barn Theatre), *The Further Adventures Of The Owl And The Pussycat*, *The Slightly Annoying Elephant*, *There's A Rang-Tan In My Bedroom* (Little Angel Theatre). More information on her work can be found at www.puppetsbymaia.com

SHERRY COENEN - Lighting Design

Sherry has been lighting shows in the US and UK since graduating with a BFA in Lighting Design from the University of Miami. Shows for Little Angel Theatre include: *Scruff*, *There May Be A Castle*, *The Singing Mermaid*, *WOW! It's Night-time*, *Prince Charming*, *The Flying Bath*, *The Bed*, *The Pixie and the Pudding*, *I Want My Hat Back Trilogy*. Other shows include: *Operation Mincemeat* (New Diorama Theatre) *KOI nominated 2019*; *Frankenstein* (Battersea Arts Centre) *KOI winner 2019*.

OLIVIA PRESTO - Stage Manager

Olivia Presto is a London based stage manager. She trained at the University of Hull studying Drama and Theatre Practice, before completing an internship at the Royal Shakespeare Company. She has been working on a freelance basis for Little Angel for the 2 years including Stage Managing the tour of *Charlie Cook's Favourite Book* National Tour. Her other recent credits include *Holby City*, *Pinocchio* and *Count Arthur Strong's UK Tour*.

Production Credits:

PUPPET MAKERS -
Maia Kirkman-Richards,
Ruby Boswell-Green
Paul Richards
Ruby Gibbens
Jo Lakin
Megan Caseley

SET ASSISTANT -
Gisela Mulindwa
Dan Southwell

SET CONSTRUCTION -
SAS Works

CARPENTERS -
Sam Stuart
Luke Stuart
Ben Goldsmith
Ripley Richards
Jim Compston

SCENIC ARTISTS -
Jess Perkins
Sophie Latimer
Carly Ann Thompson

Music Credits:

MUSIC & LYRICS
- Barb Jungr

PIANO, MUSICAL DIRECTION
- Jenny Carr

BASS - Davide Mantovan

DRUMS - Jonathan Lee

RECORDED & PRODUCED By
Simon Wallace

FEATURING -
Ruth Calkin, Mark Esaias,
James Gulliford, Gilbert
Taylor

Meet the cast of A Squash and a Squeeze...

RUTH CALKIN - Performer

Ruth has worked extensively at Little Angel over many years, beginning with *The Mouse Queen* back in 2005 and most recently as Gomo in *Prince Charming* earlier this year. Other LAT productions include: *The Smartest Giant in Town* (Fiery Light, West End); the award-nominated solo performer show *The Bed; There May Be a Castle; The Very Old Man with Enormous Wings* (Little Angel/Kneehigh) and *The Tempest* (Little Angel/RSC).



MARK ESAIAS - Performer

Training: Bretton Hall. Theatre includes: *Dogs Don't Do Ballet* (Little Angel Theatre); *Jack and the Beanstalk* (Norwich Puppet Theatre); *Clementine's Christmas Special* (Crazy Coqs residency); *The Smartest Giant in Town* (UK Tour); *Three Colours* (Norwich Puppet Theatre/Polka Theatre); *Twirlywoos LIVE* (UK Tour); *In the Night Garden LIVE* (UK Tour).

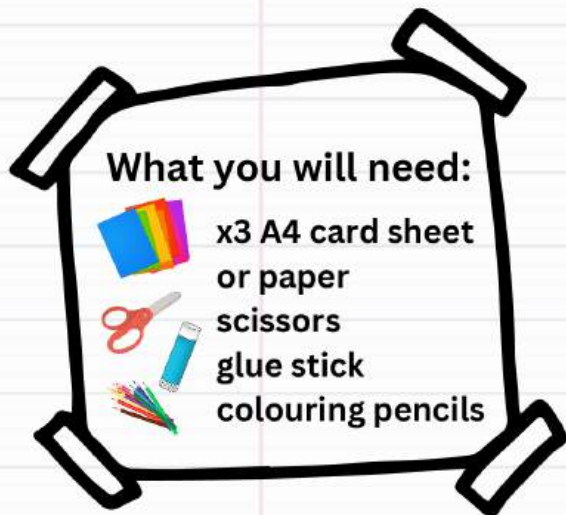


GILBERT TAYLOR - Performer

Gilbert trained at the central school of speech and drama and has performed in a number of productions at Little Angel over the last 12 years. Other recent theatre work includes: *Pythagoras's Toolkit* by Dotted Line (Montreal), *King of Nothing* by Monstro (UK tour) and is part of the Ukulele Apothecary who can often be found on the streets of Britain serenading people's woes away.



Make your own Ice-Lolly stick Farm!



Step 1:

Collect a handful of old ice-lolly sticks that you no longer have use for - this will be the base to your puppets!



Think about your favourite farm animals and what environment they might live in!

Step 2:

Choose your favourite animals and print them out OR trace onto card.



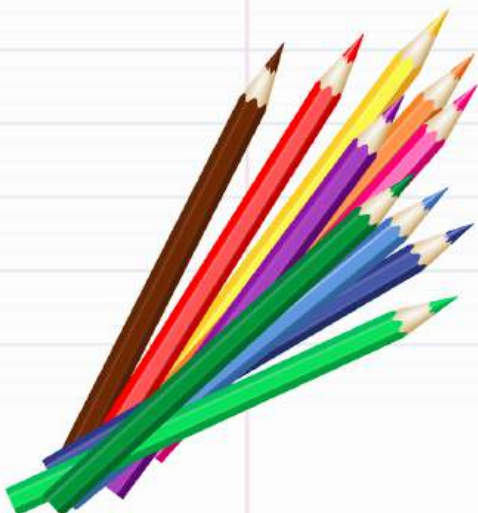
Ask a grown-up to help with this step!

Step 3:

Get colouring! Will your little piggies be pink or blue or yellow - it's up to you!



Think about the personalities of your farm animals and try to reflect this in your artwork!



Step 4:

Carefully cut around your drawings. You might need a grown-ups help for this part!



Remember to give them a name - We want to hear all about your character!

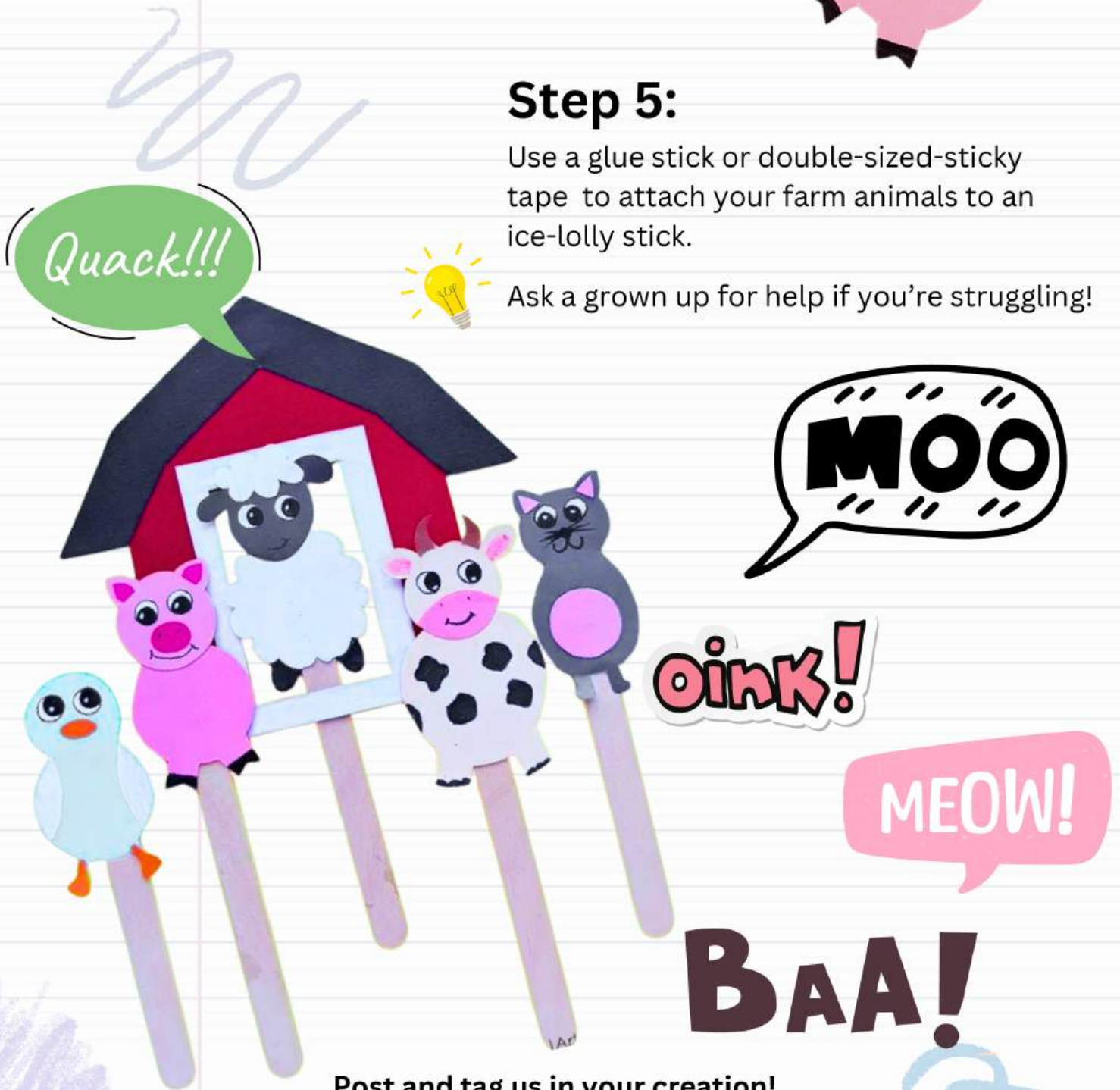


Step 5:

Use a glue stick or double-sized-sticky tape to attach your farm animals to an ice-lolly stick.



Ask a grown up for help if you're struggling!



Post and tag us in your creation!



@littleangeltheatre

Were you inspired by the show?

Draw your own busy home life and share it with us!

Please send your completed drawings to marketing@littleangeltheatre.com and post and tag us on social media!



my family

Draw a picture of your home and family and label them. Be sure to include any pets you have!

